

# GIRL GUIDING SUSSEX EAST COUNTY



**OLAVE**  
INTERNATIONAL CAMP 26



# Subcamps

12 subcamps

- 10 division subcamps
- Ranger subcamp
- Central subcamp, with family camping area



# Camp day

07:30 – 09:30	Breakfast and subcamp time
09:30 – 11:30	Morning activities
11:30 – 13:30	Lunch and subcamp time
13:30 – 16:30	Afternoon activities
16:30 – 18:30	Dinner and subcamp time
18:30 – 21:00	Evening activities
21:00 – 22:00	Subcamp time
22:00 – 07:30	Quiet

Subcamp time: a chance for leaders to check in with girls, get ready for the next part of the day and have a bit of down time.



# Arrivals and departures

## Volunteers:

- Will be able to arrive on Friday, time to be confirmed
- No deadline for subcamps to be cleared on the Saturday

## Girls:

- Staggered arrivals and departures
- Anticipate less coaches and more to be dropped off and collected by parents

No programme for Saturday afternoon, girls are expected to be involved with putting up tents and decorating their subcamps.

We will provide some activities to do in subcamps



# Camp layout

Subcamps will be on Larks field

Most other things on Chiff Chaff field





# Inclusion

We want to give everyone the best experience we can.

Please talk to your subcamp leader and the central management and admin team about any additional needs and adjustments as soon as possible to help us prepare.



# First aid

Subcamps will be responsible for first aid.

Central first aid will provide support and advice to subcamp teams.



# Safeguarding

Any volunteer staying overnight must be registered on GO in a role requiring disclosure checks.

All volunteers must have valid safer guiding.

Be aware of any due for renewal before Olave and make sure these are renewed on time.

Support and advice on any safeguarding issues or concerns will be available at camp.



# Catering

External caterers will provide all meals.

Special diets will be catered for at a separate servery.

Bedtime hot chocolate to be done in subcamps.



# Creche

Mini-Olave for children age 4 to 10.

Other options for younger and older children.

Children will need to pay the £250 camp fee but there will be no charge for creche.

Details and registration forms for the creche will be sent to volunteers who have requested details. If there is anyone else who needs the details please let us know.



# Shop and camp wear

There will be a camp shop.

Guides and Rangers will get a camp hoody.

Camp hoodies and t-shirts will be available to pre-order for volunteers.



# Mobile phones

Guides and Rangers not allowed to bring phones, smart watches and other devices.

Volunteers to be mindful of how phones are used around girls.



# Guests

Update from Sarah, International advisor:

So far groups and volunteers from other areas of the UK and Canada, and expressions of interest from Japan.



# Programme

Girlguiding Sussex East County





# Explore the past

## Think traditions of Guiding

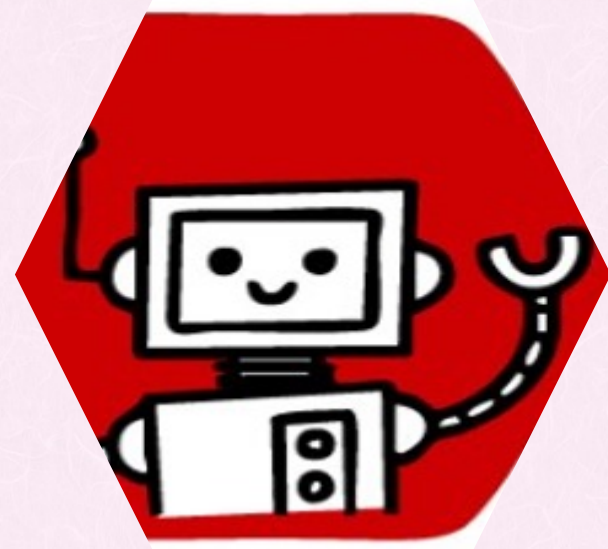




Explore now

Chilled out space  
Yoga  
meditation





# Explore the future

Learning new skills  
Using tools  
Thought provoking





Explore all around

Watersports  
Quest activities  
Explore the area





Explore above

Escape rooms  
Planets/Astronomy  
Craft





# Olave the night

Barn dance/Ceilidh  
"Stomp"  
Talent show  
Cinema



A vintage map of the Arctic region, showing Greenland, Baffin Bay, and the Kara Sea. The map is yellowed with age and has a torn edge. It includes various geographical labels such as 'Wrangel Land', 'Banks I.', 'Barrow Pt.', 'Markenzie Bay', 'Greenland', 'Franz Josef', 'Egedes', 'San Mayen I.', 'Hammerfest', 'North C.', 'Kara Sea', 'Walgarah I.', 'Ust Olensk', 'Lena Delta', and 'Wrangel'. The map is oriented with North at the top.

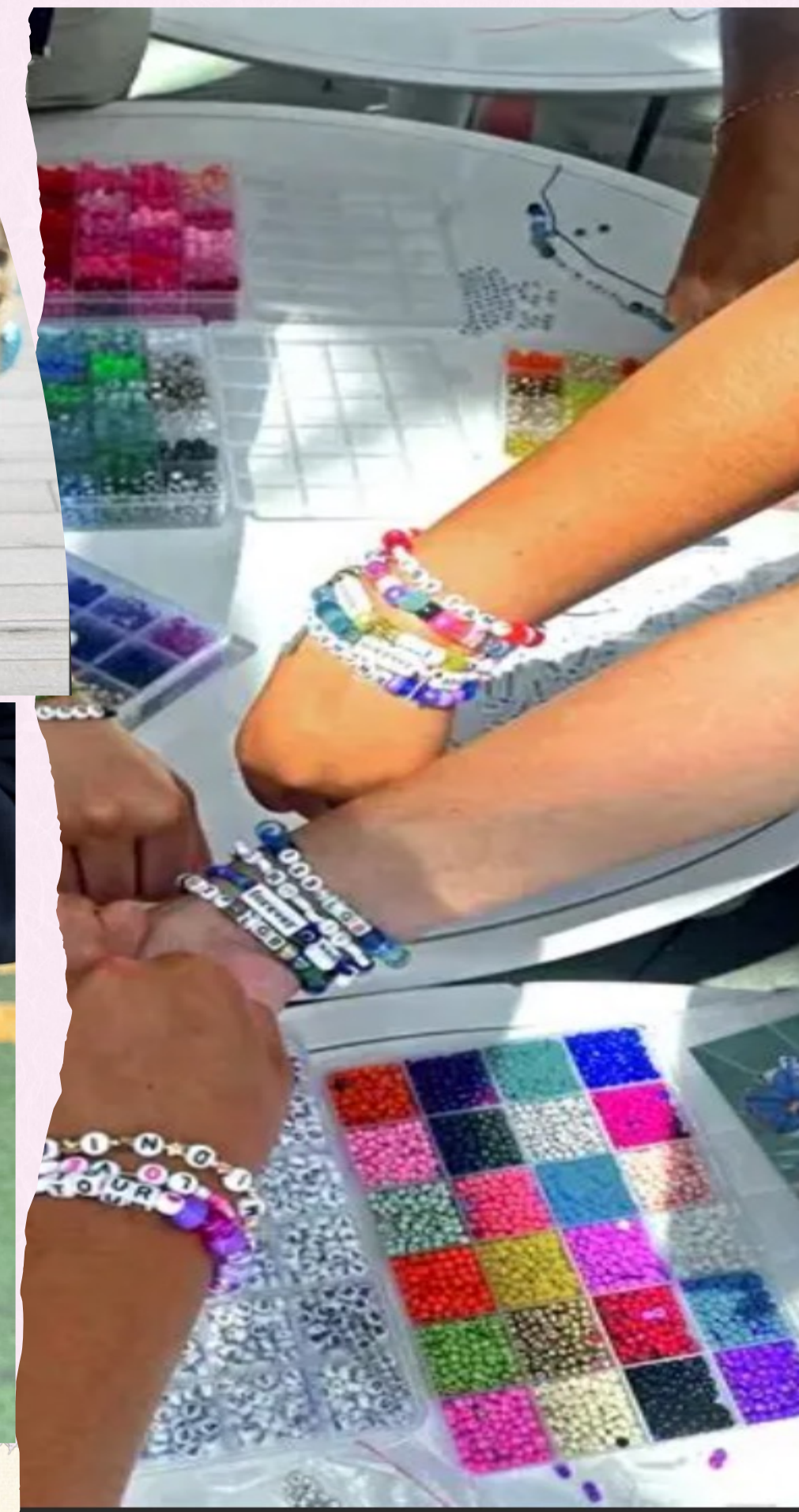
# Tuesday 28 July

Open day where Rainbows and Brownie, Guides, Rangers or adults can visit Olave. Day of central activities for everyone to join in.



# Camp Challenge

Build your own  
story bracelet





# Reminder

Next instalment for Guides and Rangers is due at the end of November.

Units to collate payments and send to the Olave account.

When you have made payment email Gill at [finance@olave.org.uk](mailto:finance@olave.org.uk) with a list of girls your payment covers.



# Subcamp colours

(as randomly selected at the briefing day)

Emerald	Rangers
Grape	Lewes
Purple	Hastings
Turquoise	Weald
Pink	Central
Centenary gold	Eastbourne
Centenary blue	Brighton East
Bright yellow	Hove
Scarlet	Rye & Rother
Tangerine	Brighton West
Khaki	Seahaven
Dark red	St Leonards

GIRL GUIDING SUSSEX EAST COUNTY



OLAVE<sup>26</sup>  
INTERNATIONAL CAMP